

SHL MANUAL POLISHING MACHINE MP 550

The SHL MP 550 for manual work piece guidance is specifically designed for polishing, grinding, abrasive surface finishing, deburring and brushing processes. All required electrical components for the machine are fitted in a converter.

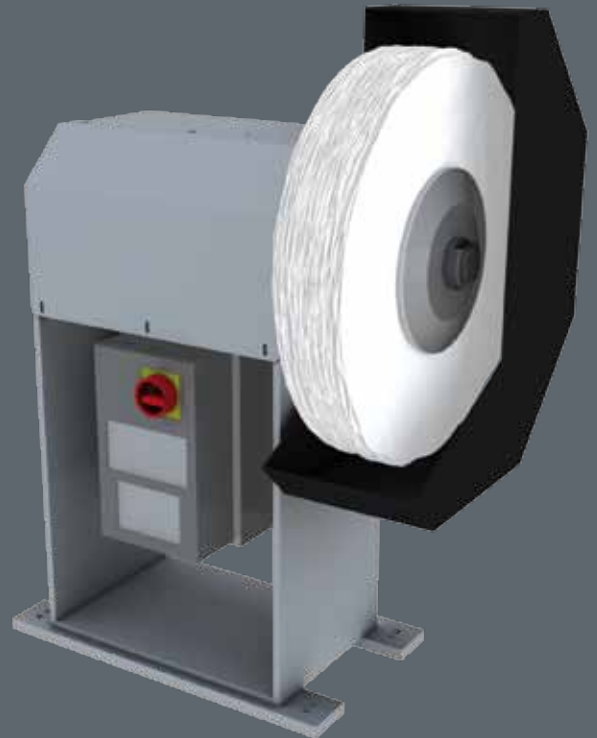
The MP 550 uses the latest the polishing technology and it is designed for use of discs up to 550 mm in diameter.

The machine meets the special requirements for polishing profiled work pieces and mould parts, using steplessly adjustable speeds; this includes even most difficult contours made of metal, NF-metals, wood and plastics.

The compact design offers a large degree of freedom for the movement of the workpiece.

Special technical features

- Frequency converter controlled by microprocessor – for the stepless regulation of the spindle speed.
- Digital display of the output frequency in the converter – for exact adjustment of the speed level to the relevant area of application.
- Compact frequency converter with integrated main switch (emergency stop), start/stop buttons, arrow, upward and downward buttons for speed selection, display of the output frequency (speed assignment).



MP 550



Application example: Special grinding arm attachment

Special grinding arm attachment

More flexibility and versatility for your MP 550 polishing unit

The versatile special grinding arm attachment allows you to convert your MP 550 polishing unit to the grinding unit within a short period of time.

Belt width:	100 mm
Band length:	3500 mm

Can be ordered as an option!

Technical data MP 550

Motor power:	4 kW
Speed:	400-2000 rpm
Disc dimensions:	min. Ø 250 mm max. Ø 550 mm
Disc package width:	max. 100 mm
Spindle diameter:	45 mm
Spindle center height:	700 mm
Extraction connection:	140 mm
Polishing fluid unit :	without
RAL color:	7035 / 7016



SHL Automatisierungstechnik AG
Spaichinger Weg 14, D-78583 Böttingen

Fon: +49-(0)7429 - 9304-0
Fax: +49-(0)7429 - 9304-50
Internet: www.shl.ag
E-Mail: info@shl.ag